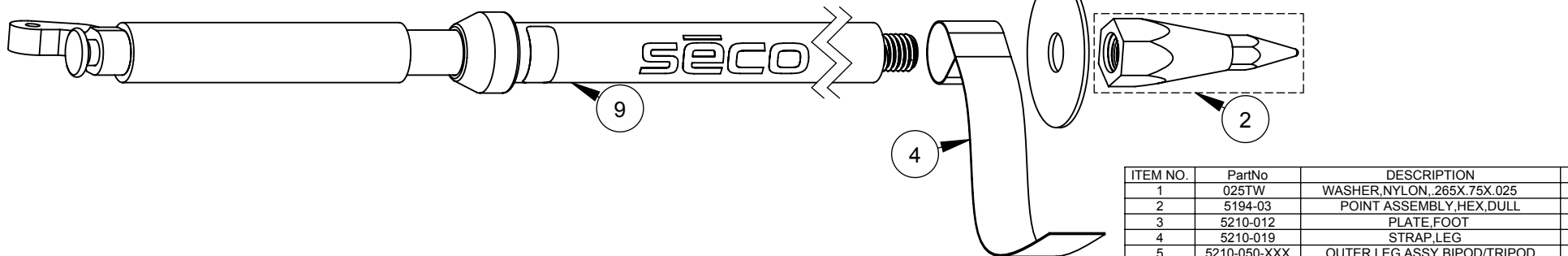
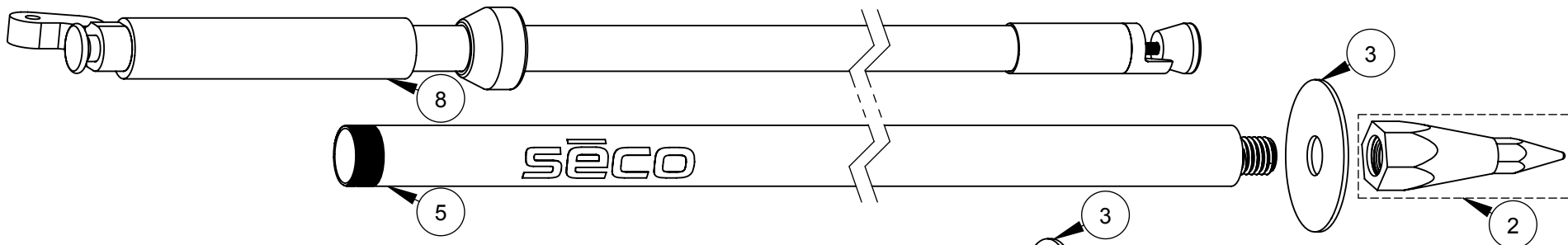
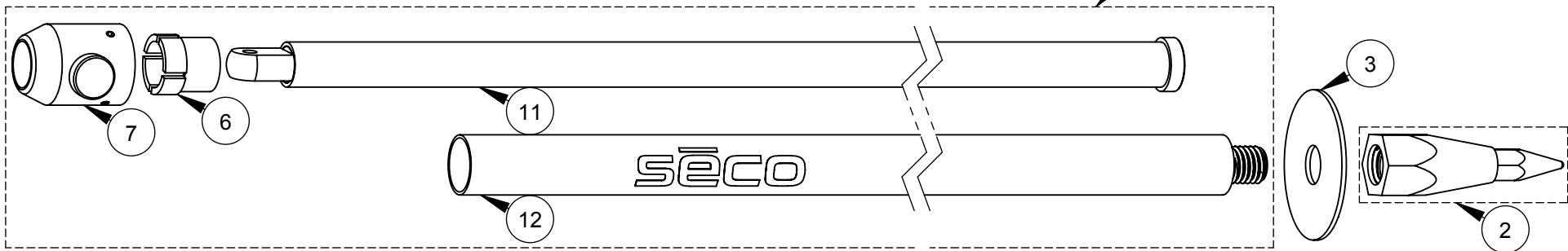


5213-053-XXX
LEG ASSY, COMPLETE, MCHENRY



***NOTE**
Components may be sold separately.
Please see sub-assembly part number
drawing for details.

-XXX	COLOR
-FLY	FLO-YELLOW
-YEL	YELLOW
-FOR	FLO-ORANGE
-RED	RED

ITEM NO.	PartNo	DESCRIPTION	QTY
1	025TW	WASHER,NYLON,.265X.75X.025	2
2	5194-03	POINT ASSEMBLY,HEX,DULL	3
3	5210-012	PLATE,FOOT	3
4	5210-019	STRAP,LEG	1
5	5210-050-XXX	OUTER LEG ASSY,BIPOD/TRIPOD	1
6	5213-003	LOCKRING,BIPOD,MCHENRY,MOLDED	1
7	5213-054	GUIDE ASSY,STOP,MCHENRY	1
8	5217-054	LEG,ASSY,INNER,THUMB RELEASE	1
9	5217-055-XXX	LEG ASSY,COMPLETE,THUMB RELEASE	1
10	5218-057	HEAD ASSY,TRIPOD,UNIVERSAL	1
11	5218-059	KIT,INNER,3/4",MCHENRY,TRIPOD	1
12	5218-060-XXX	KIT,OUTER,1",MCHENRY	1
13	6X28MMSSHSS	SCREW,SOCKET CAP,M6X28LONG,SS	1
14	D10713	WASHER,LOCK,M6,.240X.390X.062	1

5218-02-XXX

TRIPOD, THUMB RELEASE, PRISM POLE

DATE: 5/15/17

REV. B5

PAGE 1 OF 1

sēco

REDDING: 800-824-4744
www.surveying.com